

Complex Class 1 Integrons with Diverse Variable Regions, Including *aac(6')*-*Ib-cr*, and a Novel Allele, *qnrB10*, Associated with IS *CR1* in Clinical Enterobacterial Isolates from Argentina

María Paula Quiroga, Patricia Andres, Alejandro Petroni, Alfonso J. C. Soler Bistué, Leonor Guerriero, Liliana Jordá Vargas, Angeles Zorreguieta, Marta Tokumoto, Cecilia Quiroga, Marcelo E. Tolmasky, Marcelo Galas and Daniela Centron

Antimicrob. Agents Chemother. 2007, 51(12):4466. DOI: 10.1128/AAC.00726-07.

Published Ahead of Print 15 October 2007.

Updated information and services can be found at:
<http://aac.asm.org/content/51/12/4466>

These include:

REFERENCES

This article cites 18 articles, 16 of which can be accessed free at: <http://aac.asm.org/content/51/12/4466#ref-list-1>

CONTENT ALERTS

Receive: RSS Feeds, eTOCs, free email alerts (when new articles cite this article), [more»](#)

Information about commercial reprint orders: <http://journals.asm.org/site/misc/reprints.xhtml>
To subscribe to to another ASM Journal go to: <http://journals.asm.org/site/subscriptions/>

Complex Class 1 Integrons with Diverse Variable Regions, Including *aac(6')-Ib-cr*, and a Novel Allele, *qnrB10*, Associated with *ISCR1* in Clinical Enterobacterial Isolates from Argentina[▽]

María Paula Quiroga,^{1†} Patricia Andres,^{2†} Alejandro Petroni,² Alfonso J. C. Soler Bistué,³
Leonor Guerriero,² Liliana Jordá Vargas,¹ Angeles Zorreguieta,³ Marta Tokumoto,⁴
Cecilia Quiroga,¹ Marcelo E. Tolmasky,⁵ Marcelo Galas,² and Daniela Centrón^{1*}

Departamento de Microbiología, Parasitología e Inmunología, Facultad de Medicina, Universidad de Buenos Aires, Buenos Aires,¹
Servicio Antimicrobianos, Departamento de Bacteriología, Instituto Nacional de Enfermedades Infecciosas—ANLIS Carlos G. Malbrán,
Buenos Aires,² Fundación Instituto Leloir, CONICET, FCEyN, Universidad de Buenos Aires, Buenos Aires,³
and Instituto de Cardiología y Cirugía Cardiovascular (ICYCC) Fundación Favaloro, Buenos Aires,⁴
Argentina, and California State University Fullerton, Fullerton, California⁵

Received 5 June 2007/Returned for modification 12 July 2007/Accepted 2 October 2007

Transferable quinolone resistance has not previously been reported in Argentina. Here we describe three complex class 1 integrons harboring the novel allele *qnrB10* in a unique region downstream of *orf513*, one of them also containing *aac(6')-Ib-cr* within the variable region of integrons. The three arrays differed from *bla*_{CTX-M-2}-bearing integrons, which are broadly distributed in Argentina.

Three types of transferable (i.e., plasmid-encoded) quinolone resistance mechanisms have been reported so far, i.e., (i) a quinolone-protective mechanism encoded by the *qnr* genes (15), (ii) a double class antibiotic-modifying enzyme encoded by a two-point mutation allele of *aac(6')-Ib* [named *aac(6')-Ib-cr*] which acetylates ciprofloxacin and norfloxacin (14), and (iii) an efflux pump encoded by the *qepA* gene (12, 19). Different transferable *qnr* determinants have been described so far, i.e., *qnrA*, *qnrB*, and *qnrS* (15). The *qnrB* determinants were associated with either the *orf1005* gene, which encodes a putative transposase (7), or the *orf513* recombinase gene (5), the latter included in a region recently named *ISCR1* (16). The origin of *qnrB* is unknown, although QnrB-like proteins were recently found in members of the *Vibrionaceae* family (13). Here we describe a novel quinolone resistance determinant, *qnrB10*, downstream of *orf513* and embedded within different complex class 1 integrons.

(This study was presented in part at the 47th Interscience Conference on Antimicrobial Agents and Chemotherapy, 17 to 20 September 2007, Chicago, IL [A. Petroni, P. Andres, A. Soler-Bistué, P. Quiroga, A. Zorreguieta, D. Centrón, and M. Galas, abstr. 47th Intersci. Conf. Antimicrob. Agents Chemother., abstr. C1-112, 2007].)

To investigate the occurrence of *qnr* genes in Argentina, we focused on clinical isolates resistant to ciprofloxacin and to at least two different families of antibiotics. Eighteen enterobacterial isolates from three hospitals from Buenos Aires were analyzed for the presence of the *qnrA*, *qnrB*, and *qnrS* genes by

PCR (Table 1). None of them contained *qnrA* or *qnrS*, but eight isolates were *qnrB* positive (Table 2). Sequence analysis (NCBI BLAST V2.0) confirmed the identification of a novel *qnrB* allele, designated *qnrB10* (accession number DQ631414), which showed maximal nucleotide identity (97%) with *qnrB5* (6). The deduced QnrB10 protein (226 amino acids) has 98% and 95% identity with QnrB5 and QnrB1, respectively. The *qnrB10* gene was cloned into the pCR2.1 vector (Invitrogen, Carlsbad, CA) by following the manufacturer's recommendations. The expression of this gene, under induction with 1 mM isopropyl-1-thio-β-D-galactopyranoside (IPTG), increased the ciprofloxacin MIC 32-fold compared to that for the host strain, *Escherichia coli* DH10B (Table 3).

Two *qnrB10*-bearing isolates showing different resistance profiles, *Enterobacter cloacae* E705 and *Klebsiella pneumoniae* M7943, were selected for further studies. Relevant susceptibility data (4) are shown in Table 3. To gain insights into the possible mechanisms of dissemination of *qnrB10*, we characterized its genetic environments in both isolates. For this, we used standard PCR long amplification conditions (fragments > 4 kb) implemented with the Elongase kit (Invitrogen) in accordance with the manufacturer's recommendations, followed by DNA sequencing (Table 1; Fig. 1A). Each isolate harbored a complex class 1 integron with a different variable region 1 (vr-1) composed of the 5' conserved sequence (5'-CS) and the 3'-CS but exhibiting another unique variable region, vr-2, located between *ISCR1* and the second copy of the 3'-CS (Table 2; Fig. 1A). The E705 integron, named In131::ISCR1::*qnrB10* (see below for a discussion of the nomenclature), showed a new vr-1 comprising the *aac(6')-IId* and *aadA1a* cassettes, while the In37::ISCR1::*qnrB10* integron harbored *aac(6')-Ib-cr*, *bla*_{OXA-30}, *catB3*, and *arr-3*. This last array has been previously found in In37 from an *E. coli* isolate from China, which has *qnrA1* in vr-2 (accession number AY259086) (18), and in the integron from a *K. pneumoniae* strain isolated in France which harbors *qnrB4* in vr-2 [plasmid pRBDHA, accession number

* Corresponding author. Mailing address: Departamento de Microbiología, Facultad de Medicina, Universidad de Buenos Aires, Paraguay 2155, P-12, Ciudad Autónoma de Buenos Aires, Argentina. Phone: 54 11 5950-9500, ext. 2171. Fax: 54 11 4964 2554. E-mail: dcentron@gmail.com.

† María P. Quiroga and Patricia Andres contributed equally to this work.

[▽] Published ahead of print on 15 October 2007.

TABLE 1. Primers used in PCR and DNA sequencing

Target and primer ^a	No. ^b	Sequence (5'–3')	Reference
<i>qnr</i> genes			
<i>qnrA</i> or -C (screening)			
qnr-F		TCAGCAAGAGGATTTCTCA	This study
qnr-R		GGCAGCACTATTACTCCCA	
<i>qnrS</i> (screening)			
qnrS-F		ACGACATTCGTCAACTGCAA	6
qnrS-R		TAAATTGGCACCCCTGTAGGC	
<i>qnrB</i> (screening)			
qnrB-F	1	CCGACCTGAGCGGCACTGA	This study
qnrB-R	2	CGCTCCATGAGCAACGATGCCT	
<i>qnrB10</i> (complete gene) ^c			
qnrB-Met-F		ATGTTGTCTATTACTGTATA	This study
qnrB-STOP-R		CTAACCAATCACAGCGATG	
Complex class 1 integrons			
<i>intI1</i>			
Inti1-R	3	TTCGAATGTCGTAACCGC	11
Inti1-F		CGAGGCATAGACTGTAC	8
Sulpro3 (F)	4	GCCTGACGATGCGTGGA	
vr-1			
5'CS (F)	5	GGCATCCAAGCAGCAAG	8
3'CS (R)	6	AAGCAGACTTGACCTGA	
<i>orf513</i> (3'-CS junction), <i>orf513</i> -R5'	7	CGTAACCGTTTGTTTGAGTG	This study
<i>orf513</i> (screening)			
orf513-F		ATGGTTTCATGCGGGTT	2
orf513-R		CTGAGGGTGTGAGCGAG	11
vr-2			
orf513-F3'	8	GTTCGATCCATCACAGAG	This study
sul1-R	9	TTTGAAGGTTTCGACAGC	
<i>orf5</i> , <i>orf5</i> lower (R)		TGTCGACGTGGGTGAAT	This study
<i>orf6</i> , In21-R	10	CGGTGCGACTGCAAGTGA	This study
Resistance cassettes and other genes of the integrons characterized in this study			
<i>aadA1</i>			
aadA1-F		TTGCTGGCCGTACATTTG	This study
aadA1-R		TCATTGCGCTGCCATTC	
<i>aac(6')-Ib</i> (any variant) and <i>aac(6')-IIId</i>			
aacF7334	11	CATCACAAAGTACAGCATCGTGACCAACAG	This study
aacR7907	12	TTAGGCAACACTGCGTGTTTCGCTCGAATGC	
aac6IB (R)		TGTGACGGAATCGTTGC	8
aacA4R (F)		AAACACGCCAGGCATTC	1
<i>bla</i> _{OXA-30}			
oxaIII-F		CATTATTTGAAGGAACTGAAG	This study
oxaIII-R		CACCAGTTTTCCCATACAGT	
<i>catB3</i>			
catout3'-1 (F)	13	TTTCTGCTCTATCGGGAG	This study
arr3out5'-1 (R)		TTGTTAGACGGCAAATC	
<i>arr-3</i> , <i>sapC-sapB</i>	14	GACTTGCTAACCACAGGG	This study
<i>arr-3</i> , <i>arr3</i> -F			
sapC1-R		GAATGTGATTCAGTATCG	This study
sapB4-F		AACCCGTGCGGCACAGGCCCG	
<i>arr-3</i> , <i>sapA</i>			
sapA-F	15	CAGTGGGTTCGTCTATTGC	This study
sapA-R		CGTTACTGTCCGTCGCC	
<i>arr-3</i> , <i>sapA-qnrB10</i> Junction			
sapA3-R		GCAGCAGCCTGACCACTC	This study
qnrB-F3'		CTTGGCATCGCTGTGATTG	

^a Only relevant primers (F, forward; R, reverse) are shown. Other sequence-based primers used in primer walking were excluded for brevity.^b Numbers correspond to primer locations in the PCR chart shown in Fig. 1A.^c Primers used for cloning *qnrB10* in the pCR2.1 vector.

TABLE 2. Relevant characteristics of clinical isolates and transconjugants used in this study

Isolate or strain	Yr of isolation	Hospital	Relevant resistance phenotype ^a	<i>qnrB10</i> ^b	vr-1 of <i>qnrB10</i> -bearing integrons
<i>C. freundii</i> CF701	2005	H2	AMP-AMC-CAZ-FEP-TZP-AMK-GEN-CHL-TET-SXT-NAL-CIP	+	<i>aac(6')-IId-aadA1a</i>
<i>C. freundii</i> CF702	2005	H3	AMP-AMC-CAZ-FEP-TZP-MEM-CHL-SXT-NAL-CIP	+	<i>aac(6')-Ib-aadA1a</i>
<i>E. aerogenes</i> E704	2005	H3	AMP-AMC-CAZ-TZP-GEN-CHL-SXT-NAL-CIP	+	<i>aac(6')-IId-aadA1a</i>
<i>E. cloacae</i> E701	2005	H3	AMP-AMC-CAZ-TZP-SFI-NAL-CIP	+	<i>aac(6')-Ib-aadA1a</i>
<i>E. cloacae</i> E702	2005	H2	AMP-AMC-CAZ-FEP-TZP-AMK-GEN-CHL-TET-SXT-NAL-CIP	+	<i>aac(6')-IId-aadA1a</i>
<i>E. cloacae</i> E703	2005	H2	AMP-AMC-CAZ-FEP-TZP-GEN-CHL-SXT-NAL-CIP	+	<i>aac(6')-IId-aadA1a</i>
<i>E. cloacae</i> E705	2005	H2	AMP-AMC-CAZ-TZP-GEN-CHL-TET-SXT-NAL-CIP	+	<i>aac(6')-IId-aadA1a</i>
<i>K. pneumoniae</i> M7943	2006	H1	AMP-AMC-CTX-CAZ-FEP-TZP-AMK-GEN-CHL-TET-SXT-NAL-CIP	+	<i>aac(6')-Ib-cr-bla_{OXA-30}-catB3-arr-3</i>
<i>E. coli</i> M7943-TC2			AMP-AMC-FEP-TZP-AMK-CHL-SFI-NAL-CIP	+	<i>aac(6')-Ib-cr-bla_{OXA-30}-catB3-arr-3</i>

^a Antimicrobial resistance and reduced susceptibility were tested by the disk diffusion method (4). Abbreviations: AMC, amoxicillin-clavulanic acid; AMK, amikacin; AMP, ampicillin; CAZ, ceftazidime; CHL, chloramphenicol; CIP, ciprofloxacin; CTX, cefotaxime; FEP, cefepime; GEN, gentamicin; MEM, meropenem; NAL, nalidixic acid; SFI, sulfisoxazole; SXT, trimethoprim-sulfamethoxazole; TET, tetracycline; TZP, piperacillin-tazobactam.

^b The presence of *qnrB10* was tested by PCR and sequence analysis (Table 1).

AJ971343; *aac(6')-Ib-cr* had not been recognized at the time it was published] (17). However, as shown in Fig. 1B, vr-1 of the In37::ISCRI::*qnrB10* integron differed from the other two since it lacks a 101-bp duplication of the 3'-CS located at the 5' end of the *aac(6')-Ib-cr* cassette. Also, the W→R mutation in this gene presented a silent change (CGG→AGG) with respect to the previously reported variant (14).

The genetic environments of *qnrB10* in the two integrons described here, Δ(3')*sapC-sapB-sapA* and Δ(5')*pspF*, mirrored a conserved architecture found in all of the *qnrB* contexts previously reported (accession numbers AM234698 and AJ971343) that includes the location of *qnrB* alleles in an orientation opposite to that of *orf513* (Fig. 1A) (3, 5, 17). The *sap* operon encodes a putative peptide transport system in gram-negative bacteria, while the *pspF* gene is a transcriptional activator of the stress-inducible *psp* operon. However, a deeper analysis of the *qnrB2*, *qnrB4*, and *qnrB10* environments showed relevant differences. The *sap* and *psp* operons were truncated at different outer points, and the intergenic regions between *sapA* and the *qnrB* alleles were different (Fig. 1A). Moreover, analysis of the inner boundary of the second 3'-CS showed deletions of different lengths in this element when comparing the complex class 1 integrons described so far (Fig. 1C). These data suggest that the *qnrB* alleles are located in similar genetic

contexts from probably different genomic sources, as has been described previously for *bla_{CTX-M-2}* alleles (1, 16).

To our knowledge, there is no real consensus on the naming of complex class 1 integrons. Therefore, we tried to follow the simplest criterion. We show here three class 1 integrons with essentially the same vr-1 [*aac(6')-Ib-cr*, *bla_{OXA-30}*, *catB3*, and *arr-3*] but different vr-2s. Since these three harbored the same array of cassettes with alleles that are supposed to confer the same antimicrobial resistance profile, we named the integron from *K. pneumoniae* M7943 In37, focusing on vr-1. In order to specify the genetic platform of the complex class 1 integrons, we added the genetic specification of vr-2, resulting In37::ISCRI::*qnrA1* and In37::ISCRI::*qnrB4-bla_{DHA-1}* for the integrons described by Wang et al. (18) and Verdet et al. (17), respectively, and In37::ISCRI::*qnrB10* for our finding in *K. pneumoniae* M7943.

Transfer of In131::ISCRI::*qnrB10* and In37::ISCRI::*qnrB10* was assayed by biparental conjugation as described before (10), with *E. coli* J53-AzR (azide resistant) as the recipient strain. Transconjugants were selected on Mueller-Hinton agar supplemented with sodium azide (100 μg/ml) and ampicillin (100 μg/ml), sulfamethoxazole (100 μg/ml), or kanamycin (50 μg/ml). Only In37::ISCRI::*qnrB10* was detected in a transconjugant, named M7943-TC2, that had the quinolone and amino-

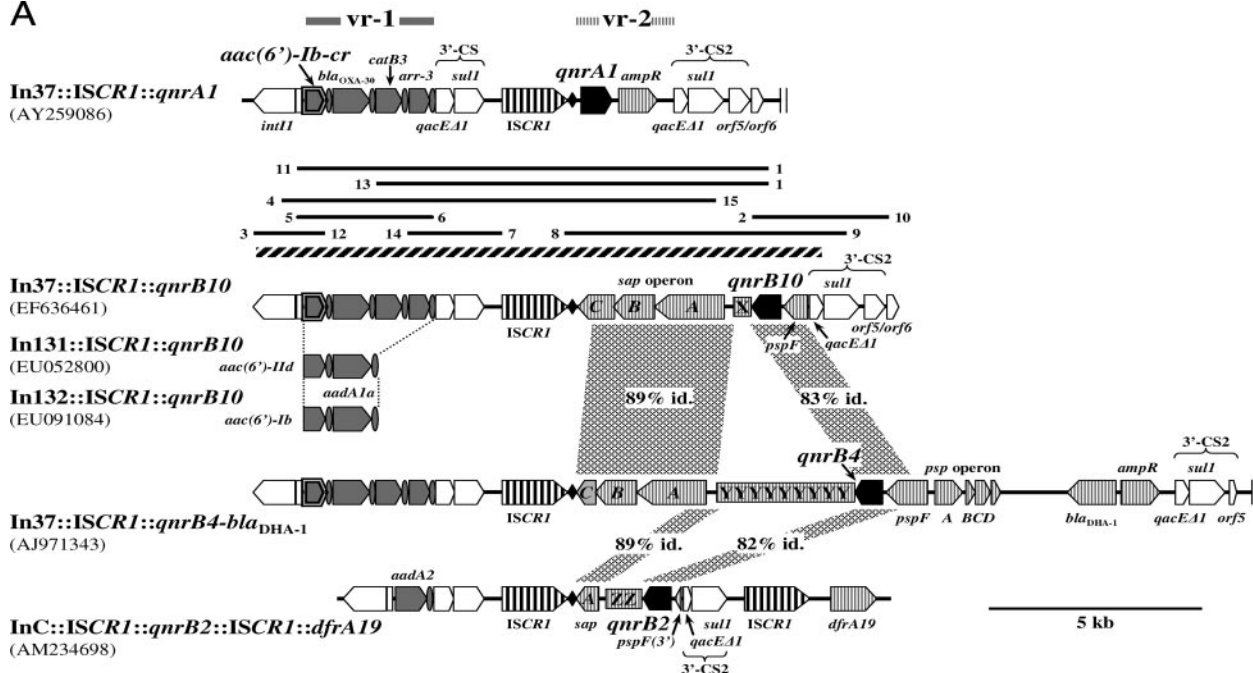
TABLE 3. Susceptibility profiles of relevant clinical isolates, bacterial recipient for conjugation experiments, transconjugants, clones, and strains used in this study

Strain	MIC (μg/ml) ^a									
	NAL	CIP	NOR	LVX	OFX	GAT	MXF	KAN	TOB	AMK
<i>E. cloacae</i> E705	≥256	≥64	≥64	≥64	≥64	32	≥64	≥256	32	8
<i>K. pneumoniae</i> M7943	128	32	32	4	8	4	8	128	16	16
<i>E. coli</i> M7943-TC2	16	2	2	0.5	0.5	0.5	1	64	16	4
<i>E. coli</i> J53-AzR	4	0.015	0.03	0.03	0.06	0.03	0.06	2	0.25	0.5
<i>E. coli</i> DH10B/pCRQB10 ^b	8	0.125	0.125	0.06	0.06	0.06	0.125	≥256	0.25	2
<i>E. coli</i> DH10B/pCR2.1	2	0.004	0.008	0.004	0.004	0.004	0.004	≥256	0.25	2
<i>E. coli</i> DH10B	2	0.004	0.008	0.004	0.004	0.004	0.004	1	0.25	1

^a MICs (4) were analyzed under induction by 1 mM IPTG. The antibiotics used for MIC determination were as follows: NAL, nalidixic acid; CIP, ciprofloxacin; NOR, norfloxacin; LVX, levofloxacin; OFX, ofloxacin; GAT, gatifloxacin; MXF, moxifloxacin; KAN, kanamycin; TOB, tobramycin; AMK, amikacin.

^b The complete *qnrB10* gene was cloned into pCR2.1 in the sense orientation with respect to the *lac* promoter.

A



B

In37::ISCR1::qnrA1	1	TTAGATGCACTAAGCACATAATTGCTCAGACGCAAACTATCAGGTCAAGTCTGCTTTTATTATTTTAAAGCGTGCATAAT
In37::ISCR1::qnrB10	1	-----TTAGGCATTAAG-----AATTCACGGCGGATTAAAGA--AAAGGAGAAGACATCGTGAC
In37::ISCR1::qnrA1	81	AAGCCCTACACAAATTGGGAGTTAGACATCATAGCAACGCAAAAAAGTTAGGCATCACAAAGTACAGCATCGTGAC
In37::ISCR1::qnrB10	81	-----TTAGGCATTAAG-----AATTCACGGCGGATTAAAGA--AAAGGAGAAGACATCGTGAC
In37::ISCR1::qnrA1	161	CAACAGCAACGATTCCGTCACACTGCGCCTCATGACTGAG...CGG...GCCTAACCCCTTC...TGTCAAACG 770
In37::ISCR1::qnrB10	54	CAACAGCAACGATTCCGTCACACTGCGCCTCATGACTGAG...AGG...GCCTAACCCCTTC...TGTCAAACG 663

C

In0	1	TTTAAGCGTG	CATAATAAGC	CCTACACAAA	TTGGGAGATA	TATCATGAAA	GGCTGGCTTT	TTCTTGTTAT
In131::ISCR1::qnrB10		GGCAAGCGTG	CATAATAAGC	CCTACACAAA	TTGGGAGATA	TATCATGAAA	GGCTGGCTTT	TTCTTGTTAT
In37::ISCR1::qnrB10		GGCAAGCGTG	CATAATAAGC	CCTACACAAA	TTGGGAGATA	TATCATGAAA	GGCTGGCTTT	TTCTTGTTAT
In35::ISCR1::bla _{CTX-M-2}		ATACGCGTG	CATAATAAGC	CCTACACAAA	TTGGGAGATA	TATCATGAAA	GGCTGGCTTT	TTCTTGTTAT
In7::ISCR1::dfrA10		ATACGTGATT	ACTAATAAGC	CCTACACAAA	TTGGGAGATA	TATCATGAAA	GGCTGGCTTT	TTCTTGTTAT
In37::ISCR1::qnrA1		CAGAAATGCA	GTGCACTCTC	CTCAACATCC	GCCAGTGC	CGACTTCCAG	CCAGACATCC	GTTACCCCGG
In6::ISCR1::cat2		TGCTTTT	TTTGTCCGCG	GGGCGCGGAT	AATGATCAGT	ATTATGCAGT	GTCACAATGG	CCTTACCGGG
In0	71	CGCAATAGTT	GGCGAAGTAA	TCGCAACATC	CGCATTAAAA	TCTAGCGAGG	GCTTTACTAA	GCTTGCCCTT
In131::ISCR1::qnrB10		CGCAATAGTT	GGCGAAGTAA	TCGCAACATC	CGCATTAAAA	TCTAGCGAGG	GCTTTACTAA	GCTTGCCCTT
In37::ISCR1::qnrB10		CGCAATAGTT	GGCGAAGTAA	TCGCAACATC	CGCATTAAAA	TCTAGCGAGG	GCTTTACTAA	GCTTGCCCTT
In35::ISCR1::bla _{CTX-M-2}		CGCAATAGTT	GGCGAAGTAA	TCGCAACATC	CGCATTAAAA	TCTAGCGAGG	GCTTTACTAA	GCTTGCCCTT
In7::ISCR1::dfrA10		CGCAATAGTT	GGCGAAGTAA	TCGCAACATC	CGCATTAAAA	TCTAGCGAGG	GCTTTACTAA	GCTTGCCCTT
In37::ISCR1::qnrA1		CAATGCCGTG	CTGTTCAGCC	TGTTCCGGGA	TAATGTCCGC	CGCACCAGG	GCTTTACTAA	GCTTGCCCTT
In6::ISCR1::cat2		ATTGGCGTAA	GCCTGCGGGA	TATCCGATG	GAAGCGCAGG	GATTCCCGG	CAGAAACGGT	GTGCCACTCA
In0	141	TCCGCCGTTG	TCATAATCGG	TTATGGCATC	GCATTTTATT	TTCTTTCTCT	TTCTTTCTCT	TTCTTTCTCT
In131::ISCR1::qnrB10		TCCGCCGTTG	TCATAATCGG	TTATGGCATC	GCATTTTATT	TTCTTTCTCT	TTCTTTCTCT	TTCTTTCTCT
In37::ISCR1::qnrB10		TCCGCCGTTG	TCATAATCGG	TTATGGCATC	GCATTTTATT	TTCTTTCTCT	TTCTTTCTCT	TTCTTTCTCT
In35::ISCR1::bla _{CTX-M-2}		TCCGCCGTTG	TCATAATCGG	TTATGGCATC	GCATTTTATT	TTCTTTCTCT	TTCTTTCTCT	TTCTTTCTCT
In7::ISCR1::dfrA10		TCCGCCGTTG	TCATAATCGG	TTATGGCATC	GCATTTTATT	TTCTTTCTCT	TTCTTTCTCT	TTCTTTCTCT
In37::ISCR1::qnrA1		TCCGCCGTTG	TCATAATCGG	TTATGGCATC	GCATTTTATT	TTCTTTCTCT	TTCTTTCTCT	TTCTTTCTCT
In6::ISCR1::cat2		TCCCCAGGCC	GCAGTTGTAA	TGCGCCTTCC	AGTACAATGA	CATGTTCTCT		

FIG. 1. Genetic organization of *qnrB10*-containing complex class 1 integrons. (A) Genes are represented by arrowed boxes (*qnr* genes are in black), *attC* is represented by vertical ovals, and the putative origin of replication of *ISCR1* (16) is represented by a black diamond. The 3'-CS and the second copy of this element (3'-CS2) are shown by white arrowed boxes. The hatched horizontal bar indicates the sequenced regions (13,281 bp in In37::ISCR1::qnrB10 and 10,762 bp in In131::ISCR1::qnrB10). Thick horizontal lines indicate the principal amplicons obtained by PCR cartography of the *qnrB10*-bearing integrons (numbers indicate the corresponding primers in Table 1). The integrons In37::ISCR1::qnrA1 (18) and In37::ISCR1::qnrB4-bla_{DHA-1} (17), having essentially the same *vr-1* as In37::ISCR1::qnrB10, were included for comparison (sequences were truncated at the two vertical thin lines). Shaded areas with percentages depict identities (id.) between *vr-1*s. The X, Y, and Z boxes indicate regions of no homology with GenBank sequences. (B) Comparison of the *aac(6')*-Ib-cr cassettes of In37::ISCR1::qnrA1 and In37::ISCR1::qnrB10 (nucleotides 1492 to 2261 and 1040 to 1702 in the sequences with accession numbers AY259086 and EF636461, respectively). Sequences are numbered from the first nucleotide following the junction with the 5'-CS, and dashes represent gaps introduced to maximize alignment (ClustalX software, available at <http://ftp-igbmc.u-strasbg.fr/pub/>). Identical nucleotides in the two sequences are in bold. The 101-bp duplication of the 3'-CS is underlined. The start (boxed) and stop (*) codons of each *aac(6')*-Ib-cr cassette are indicated, and the amino acid sequence of the deduced protein is shown below each nucleotide sequence (14). For brevity, other regions showing 100% nucleotide (or amino acid) identity are represented by dots. The silent CGG-to-AGG change (see the text for details) is also shown. (C) Deletions at the inner boundary of 3'-CS2. Nucleotide sequences correspond to In0 (normal 3'-CS, M73819), In131::ISCR1::qnrB10 (EU052800), In37::ISCR1::qnrB10 (EF636461), In35::ISCR1::bla_{CTX-M-2} (AY079169), In7::ISCR1::dfrA10 (L06418), In37::ISCR1::qnrA1 (AY259086), and In6::ISCR1::cat2 (U04277). The deletion endpoint in 3'-CS2 is defined by the first base appearing in bold. Base 1 of In0 corresponds to the nucleotide at position 65 from the normal 3'-CS.

glycoside resistance profiles for *aac(6')-Ib-cr* and *qnrB10* genes (Table 2). The presence of In37::ISCR1::*qnrB10* was also confirmed by PCR cartography.

The other six *qnrB10*-producing isolates studied here showed the same vr-2 rearrangement and either vr-1 of In131::ISCR1::*qnrB10* or a different one composed of the *aac(6')-Ib* and *aadA1a* cassettes (Table 2; Fig. 1A), which was named In132. None of the *qnrB10*-bearing integrons studied here showed the In35 rearrangement [*aac(6')-Ib-bla_{CTX-M-2}-orfD*], which is the most widespread complex class 1 integron involved in the dispersion of *bla_{CTX-M-2}* in the bacterial population from Argentina (2).

Recently, Toleman et al. proposed that ISCR1 is involved in the spread of class 1 integrons through a mechanism that mobilizes adjacent DNA sequences (16). This is in agreement with the finding that cassettes are more often transferred as part of the entire integron structure than as individual gene cassettes (9). The finding of In37 derivatives from different geographical regions with diverse vr-2s is consistent with the speculations of Toleman et al. On the basis of this hypothesis, we would also expect to find In35 associated with *qnrB10* in our nosocomial isolates.

In conclusion, the particular epidemiology of complex class 1 integrons found in isolates harboring a novel *qnrB* allele, as well as the emergence of *aac(6')-Ib-cr* cassettes in our bacterial population, evidences the need for national surveillance in order to estimate the prevalence of these mechanisms.

Nucleotide sequence accession numbers. The nucleotide sequences determined in this work have been submitted to the GenBank database and assigned accession no. DQ631414, EF636461, EU052800, and EU091084.

We thank Luis Martínez-Martínez and Laurent Poirel for graciously providing *E. coli* J53-AzR and Lo (*qnrA* producing), respectively.

M.P.Q. and C.Q. are the recipients of a CONICET fellowship. D.C. is a member of the Carrera del Investigador Científico, CONICET, Argentina. This study was supported by a grant from BID/OC AN-PCYT 13431, Buenos Aires, Argentina, to D.C.

REFERENCES

1. Arduino, S. M., P. H. Roy, G. A. Jacoby, B. E. Orman, S. A. Piñeiro, and D. Centron. 2002. *bla_{CTX-M-2}* is located in an unusual class 1 integron (In35) which includes Orf513. *Antimicrob. Agents Chemother.* **46**:2303–2306.
2. Arduino, S. M., M. Catalano, B. E. Orman, P. H. Roy, and D. Centron. 2003. Molecular epidemiology of *orf513*-bearing class 1 integrons in multiresistant clinical isolates from Argentinean hospitals. *Antimicrob. Agents Chemother.* **47**:3945–3949.
3. Cattoir, V., L. Poirel, and P. Nordmann. 2007. Plasmid-mediated quinolone resistance determinant QnrB4 in France from an *Enterobacter cloacae* clinical isolate co-expressing a *qnrS1* determinant. *Antimicrob. Agents Chemother.* **51**:2652–2653. (Letter.)
4. Clinical and Laboratory Standards Institute. 2007. Performance standards for antimicrobial susceptibility testing; seventeenth informational supplement M100-S17. Vol. 27, no. 1. Clinical and Laboratory Standards Institute, Wayne, PA.
5. Garnier, F., N. Raked, A. Gassama, F. Denis, and M.-C. Ploy. 2006. Genetic environment of quinolone resistance gene *qnrB2* in a complex *sul1*-type integron in the newly described *Salmonella enterica* serovar Keurmassar. *Antimicrob. Agents Chemother.* **50**:3200–3202.
6. Gay, K., A. Robicsek, J. Strahilevitz, C. H. Park, G. Jacoby, T. J. Barrett, F. Medalla, T. M. Chiller, and D. C. Hooper. 2006. Plasmid-mediated quinolone resistance in non-typhi serotypes of *Salmonella enterica*. *Clin. Infect. Dis.* **43**:297–304.
7. Jacoby, G. A., K. E. Walsh, D. M. Mills, V. J. Walker, H. Oh, A. Robicsek, and D. C. Hooper. 2006. *qnrB*, another plasmid-mediated gene for quinolone resistance. *Antimicrob. Agents Chemother.* **50**:1178–1182.
8. Lévesque, C., L. Piche, C. Larose, and P. H. Roy. 1995. PCR mapping of integrons reveals several novel combinations of resistance genes. *Antimicrob. Agents Chemother.* **39**:185–191.
9. Martinez-Freije, P., A. C. Fluit, F. J. Schmitz, J. Verhoef, and M. E. Jones. 1999. Many class I integrons comprise distinct stable structures occurring in different species of *Enterobacteriaceae* isolated from widespread geographic regions in Europe. *Antimicrob. Agents Chemother.* **43**:686–689.
10. Melano, R., A. Corso, A. Petroni, D. Centron, B. Orman, A. Pereyra, N. Moreno, and M. Galas. 2003. Multiple antibiotic-resistance mechanisms including a novel combination of extended-spectrum β -lactamases in a *Klebsiella pneumoniae* clinical strain isolated in Argentina. *J. Antimicrob. Chemother.* **52**:36–42.
11. Orman, B. E., S. A. Piñeiro, S. Arduino, M. Galas, R. Melano, M. I. Caffer, D. O. Sordelli, and D. Centron. 2002. Evolution of multiresistance in non-typhoid *Salmonella* serovars from 1984 to 1998 in Argentina. *Antimicrob. Agents Chemother.* **46**:3963–3970.
12. Périchon, B., P. Courvalin, and M. Galimand. 2007. Transferable resistance to aminoglycosides by methylation of G1405 in 16S rRNA and to hydrophilic fluoroquinolones by QepA mediated efflux in *Escherichia coli*. *Antimicrob. Agents Chemother.* **51**:2464–2469.
13. Poirel, L., A. Liard, J. M. Rodriguez-Martinez, and P. Nordmann. 2005. *Vibrionaceae* as a possible source of Qnr-like quinolone resistance determinants. *J. Antimicrob. Chemother.* **56**:1118–1121.
14. Robicsek, A., J. Strahilevitz, G. A. Jacoby, M. Macielag, D. Abbanat, C. H. Park, K. Bush, and D. C. Hooper. 2006. Fluoroquinolone-modifying enzyme: a new adaptation of a common aminoglycoside acetyltransferase. *Nat. Med.* **12**:83–88.
15. Robicsek, A., G. A. Jacoby, and D. C. Hooper. 2006. The worldwide emergence of plasmid-mediated quinolone resistance. *Lancet Infect. Dis.* **6**:629–640.
16. Toleman, M. A., P. M. Bennett, and T. R. Walsh. 2006. ISCR elements: novel gene-capturing systems of the 21st century? *Microbiol. Mol. Biol. Rev.* **70**:296–316.
17. Verdet, C., Y. Benzerara, V. Gautier, O. Adam, Z. Ould-Hocine, and G. Arlet. 2006. Emergence of DHA-1-producing *Klebsiella* spp. in the Parisian region: genetic organization of the *ampC* and *ampR* genes originating from *Morganella morganii*. *Antimicrob. Agents Chemother.* **50**:607–617.
18. Wang, M., J. H. Tran, G. A. Jacoby, Y. Zhang, F. Wang, and D. C. Hooper. 2003. Plasmid-mediated quinolone resistance in clinical isolates of *Escherichia coli* from Shanghai, China. *Antimicrob. Agents Chemother.* **47**:2242–2248.
19. Yamane, K., J. Wachino, S. Suzuki, K. Kimura, N. Shibata, H. Kato, K. Shibayama, T. Konda, and Y. Arakawa. 2007. New plasmid-mediated fluoroquinolone efflux pump, QepA, found in an *Escherichia coli* clinical isolate. *Antimicrob. Agents Chemother.* **51**:3354–3360.